



INVENTORY AND CHARACTERIZATION OF WILD GRAPEVINE (*VITIS VINIFERA* SUBSP. *SYLVESTRIS*) FROM NORTH MACEDONIA

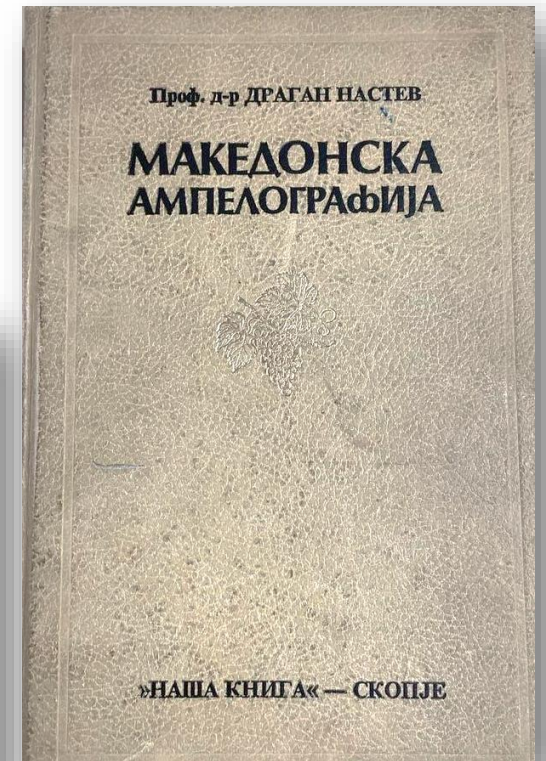
Prof. Klime Beleski, PhD
Institute of Agriculture
Department of Viticulture
Ss. Cyril and Methodius University in Skopje

10.10 2023, Kavala, Greece



History of *Vitis sylvestris* in North Macedonia

- 1977
- Macedonian Ampelography
- Prof. Dragan Nastev



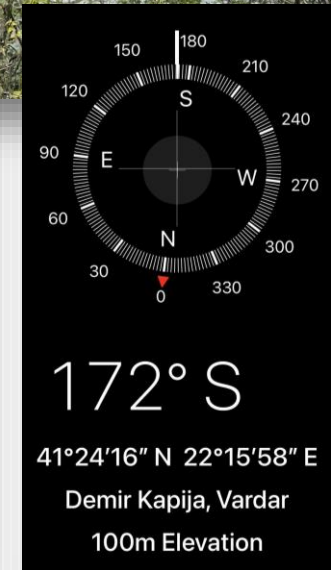
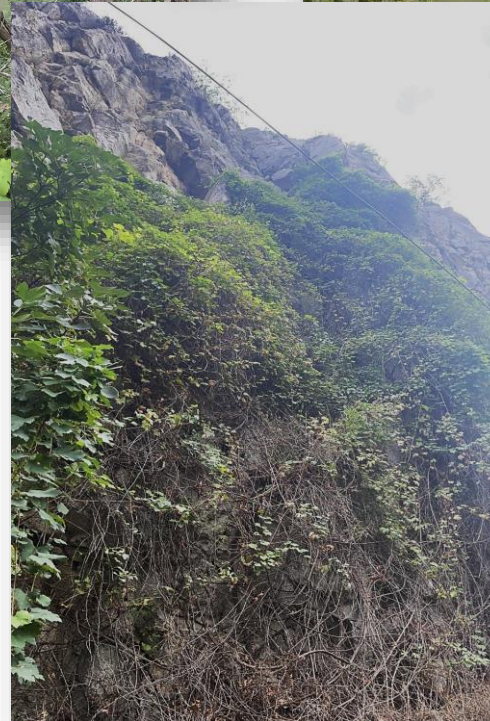
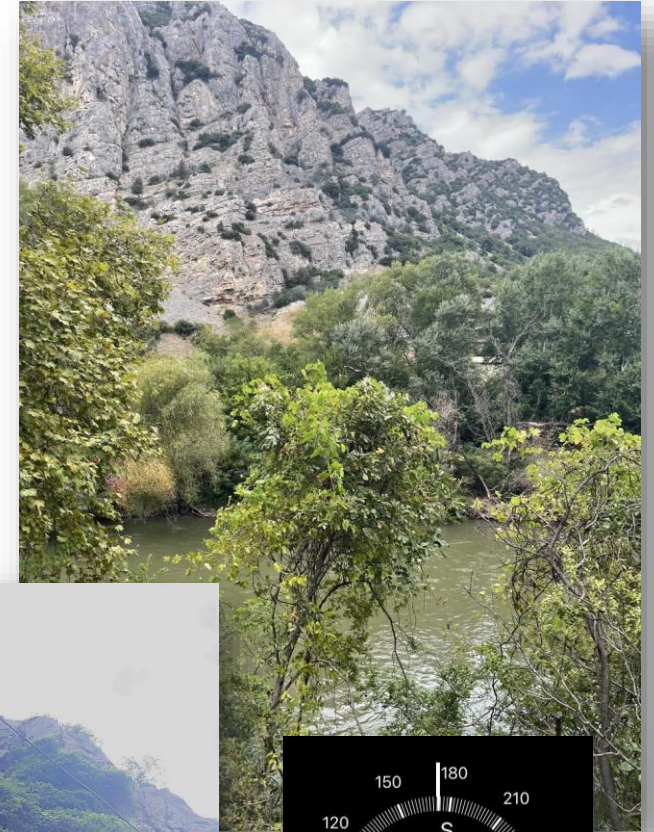
History of *Vitis sylvestris* in North Macedonia

- Vardar river
- Crna river
- Pcinja river
- Bregalnica river
- Crni Drim river



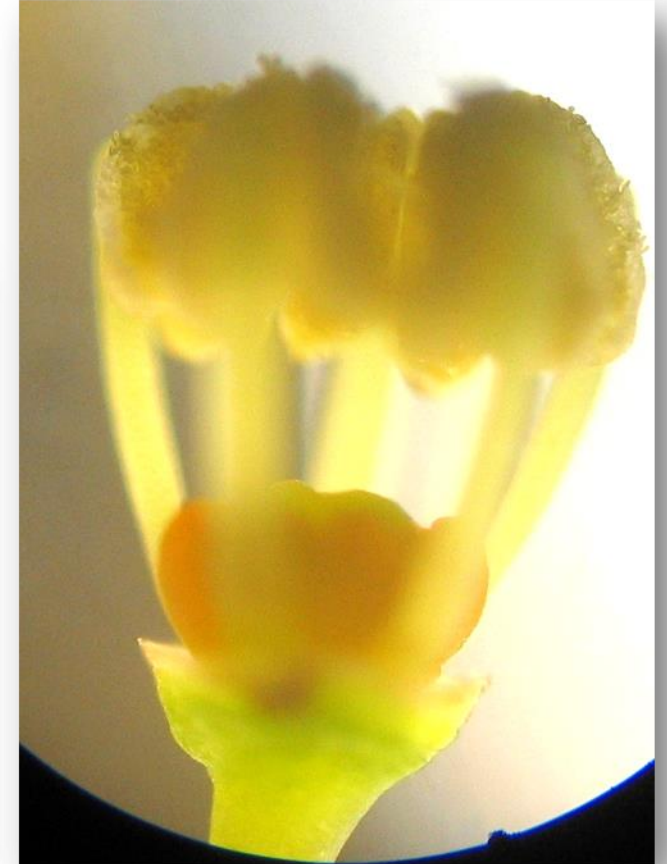
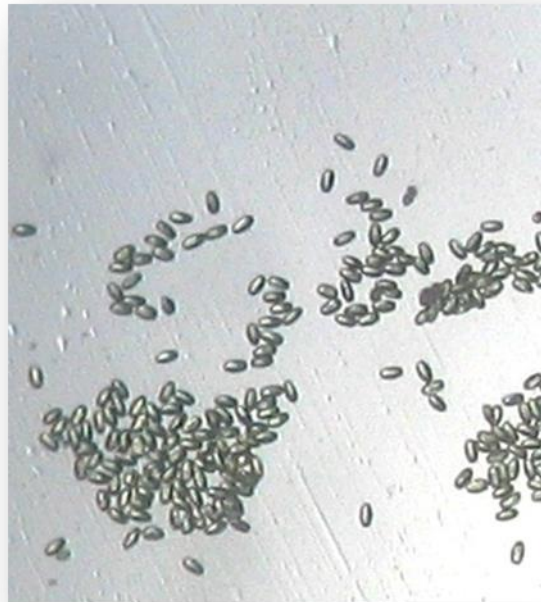
Inventory

- Vardar river
- Demir Kapija Canyon
- Altitude – 100 m
- 13 plants in total
- 8 plants beside river
- 5 plants on the rock
- elm, poplar, willow tree
- alluvial soil



Characterization Flower

- OIV151- Dioecious
- 6 plants ♂
- 7 plants ♀



Characterization

Leaf description

- OIV068 – number of lobes
- Two types:
 - 3 lobes
 - 5 lobes



Characterization

Leaf description

- Morphological description (Zdunic et al. 2017)
- **OIV078** – Mature leaf: *length of teeth compared with their width* – **medium** (0.5 cm/0.8cm)
- **OIV079** – Mature leaf: *degree of opening / overlapping of petiole sinus* – **open**
- **OIV082** – Mature leaf: *degree of opening / overlapping of upper lateral sinus* - **open**
- **OIV085** – Mature leaf: *density of erect hairs between the main veins on lower side of blade* – **low**
- **OIV087** - Mature leaf: *density of erect hairs on main veins on lower side of blade* – **low**



Characterization

Dimensions of bunch

Type of leaf	3 lobes	5 lobes
Length (cm)	7.6	6.0
Width (cm)	4.6	3.2
Weight (g)	36.0	36.0



Characterization

Dimensions of berry

Type of leaf	3 lobes	5 lobes
Number of berries	40	45
Length (mm)	11.1	11.0
Width (mm)	11.2	10.5
Weight (g)	0.9	0.8




Characterization

Chemical analyses of the must

Type of leaf	3 lobes	5 lobes
Sugar (g/L)	240.0	249.5
Total acids (g/L)	11.7	12.0



Next steps

- Molecular identification
- Verification
- *in situ*  *ex situ*



Thank you for your attention

