



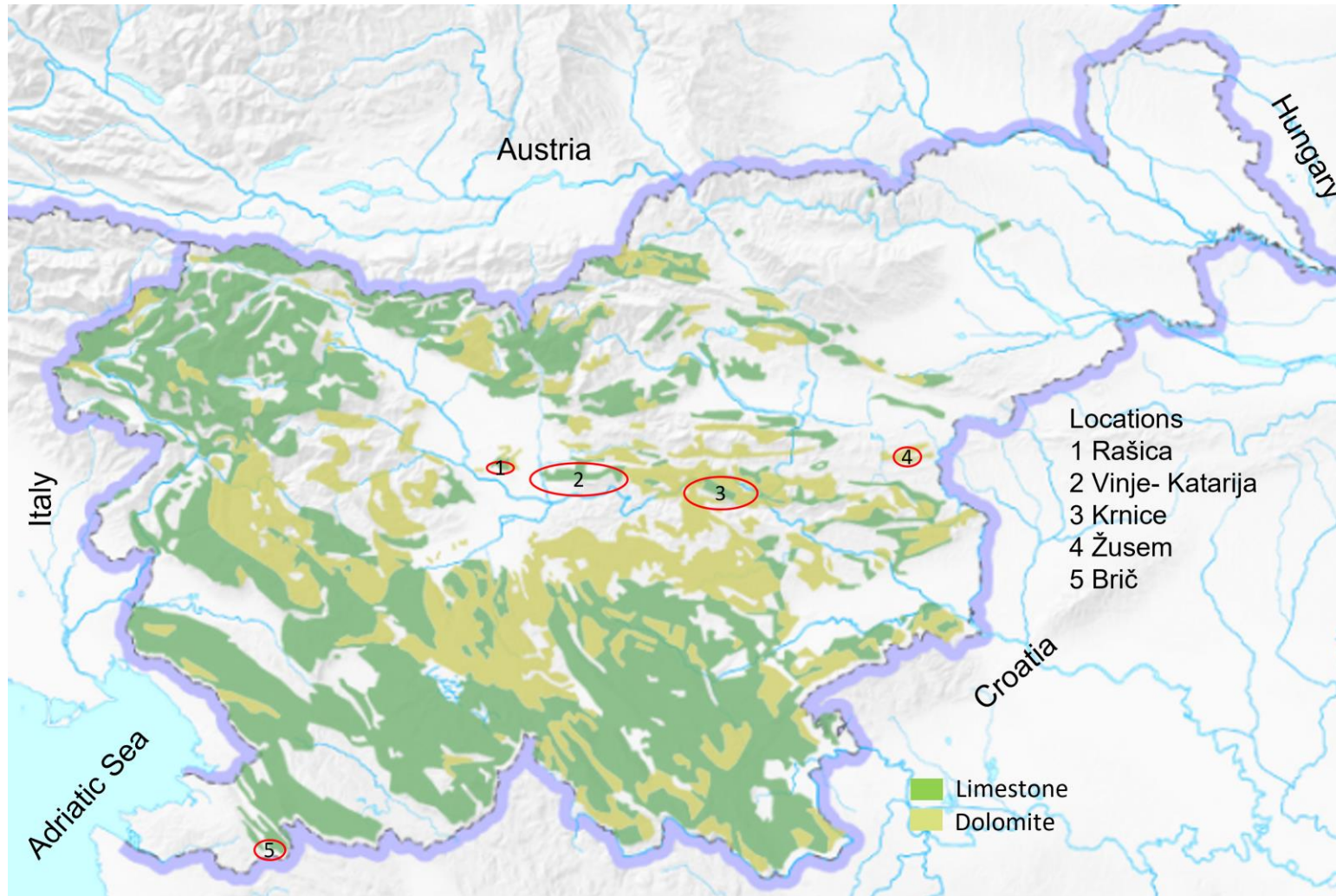
MONITORING AND GENOTYPING OF *VITIS SYLVESTRIS* LOCATIONS IN SLOVENIA

Andrej Perko, Stanko Vršič

Kavala, 10. - 11. October 2023



Locations of *Vitis vinifera subsp. sylvestris* in Slovenia



Number of accessions and analysed samples of *Vitis vinifera subsp. sylvestris* in Slovenia

Location	Nr. of accessions	Analysed samples	Nr. of female	Nr. of male
Rašica	1	1	0	1
Vinje-Katarija	60	51	23	28
Krnice	57	29	12	17
Žusem	1	1	0	1
Brič	7	7	4	3
Total	126	89	39	50

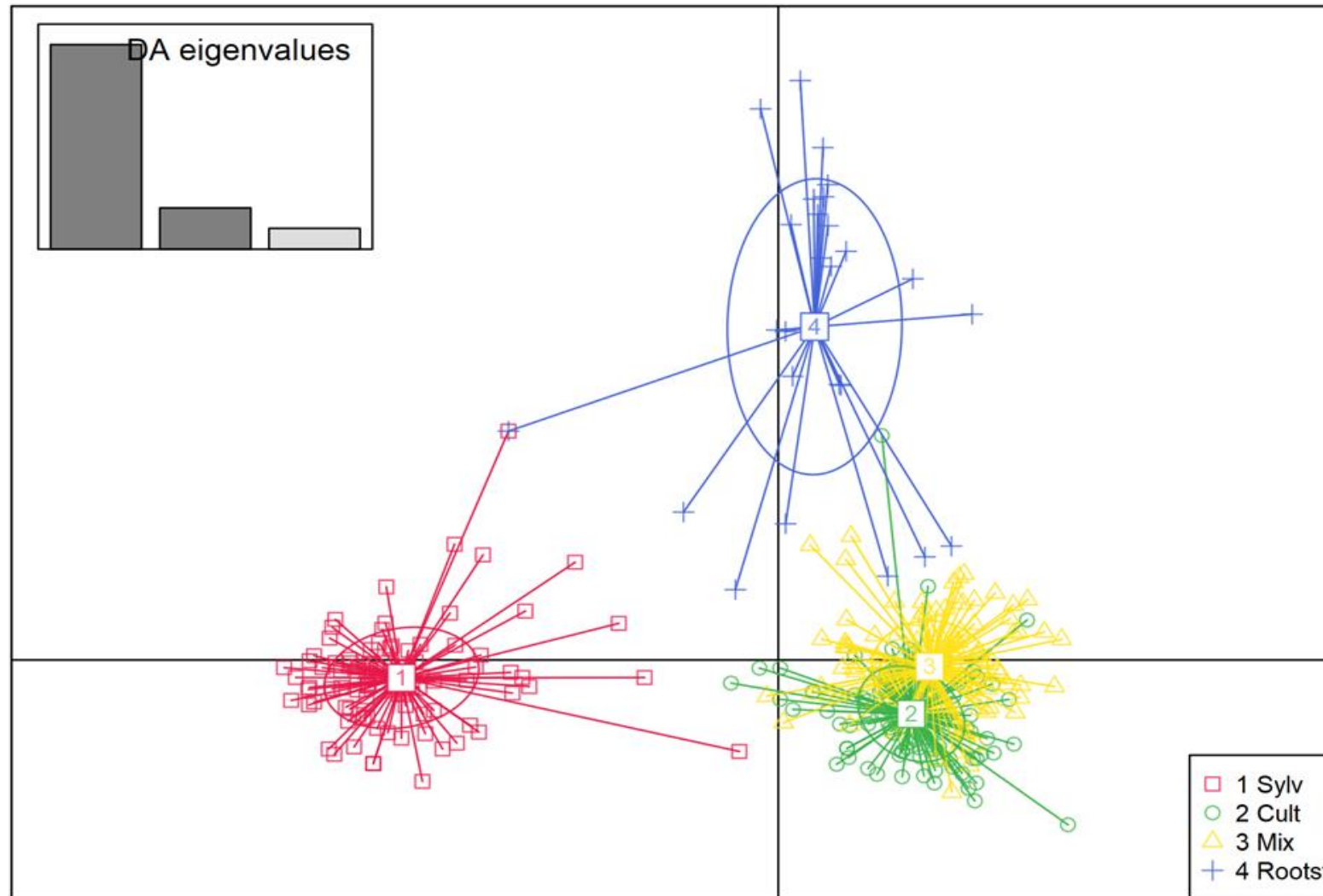


The largest established vine of *Vitis vinifera subsp. sylvestris* in Slovenia

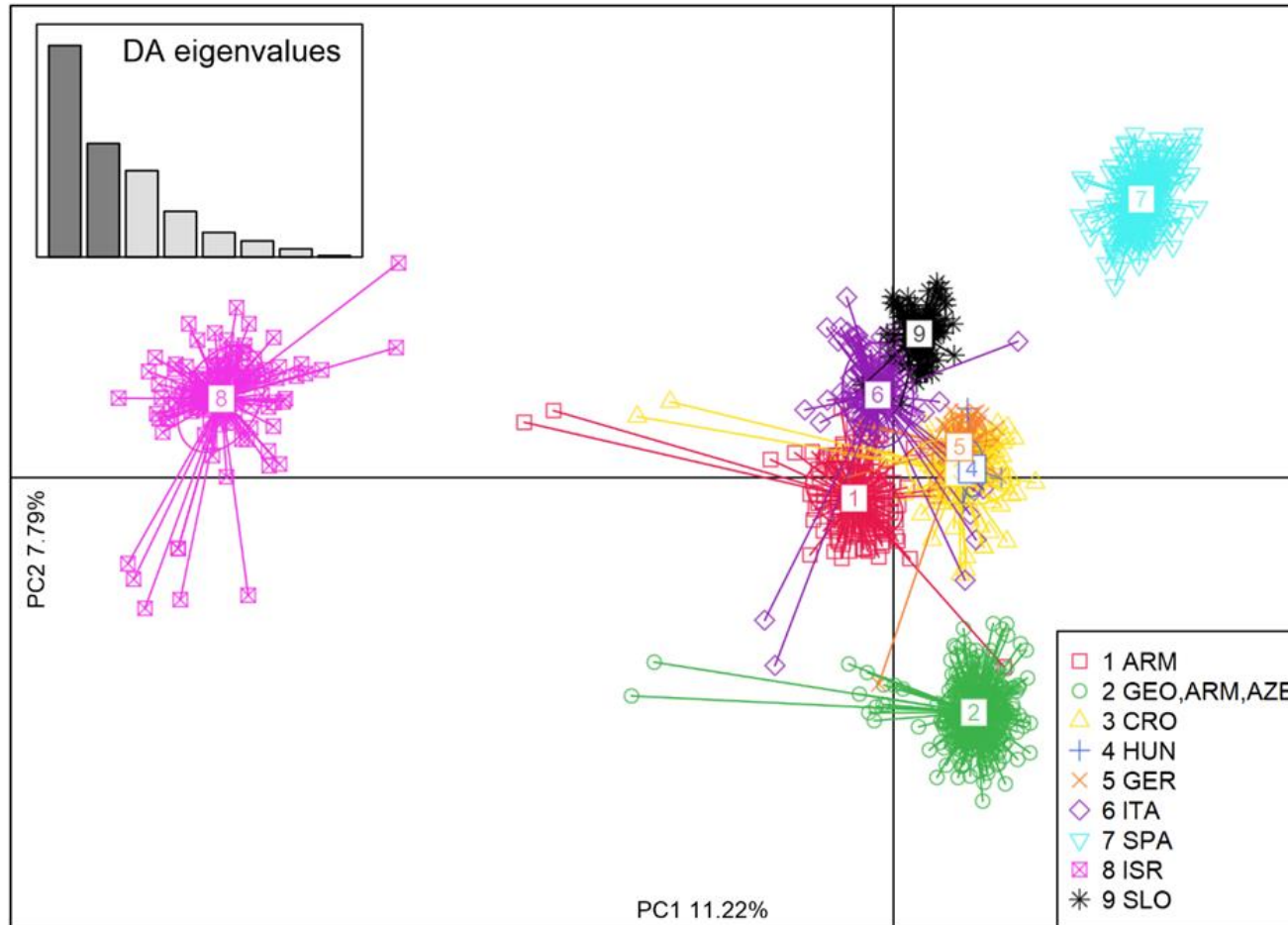
- Location; Vinje
- male plant
- trunk circumference; 59 cm in 2021
- 4 branches more than 40 m long



Molecular analysis JKI Geiweilerhof 2019 – 2022



Comparison with other European wild grapevine groups (Riaz et al. 2018; Rahimi et al. 2018; De Michele et al. 2019, De Andres et al. 2012; Zdunić et al. 2020; Margaryan et al. 2021)



Thank you for your help and advices

- Dr. Erika Maul,
- Dr. Franco Röckel
- Dr. Oliver Trapp
- Andrej Piltvaver
- Laboratory Staff at the Institut for Grapevine Breeding
Geilweilerhof



Country: Slovenia
<http://meranovo.um.si>



SVN043

**THANK YOU
FOR YOUR ATTENTION**

~450 accessions