



ΥΠΟΥΡΓΕΙΟ ΠΟΛΙΤΙΣΜΟΥ
ΕΦΟΡΕΙΑ ΑΡΧΑΙΟΤΗΤΩΝ ΚΑΒΑΛΑΣ
MINISTRY OF CULTURE
EPHORATE OF ANTIQUITIES OF KAVALA



SYLVESTRIS

INCREASING THE EFFICIENCY OF
CONSERVATION OF *VITIS SYLVESTRIS*
GENETIC RESOURCES IN EUROPE

Georgios Merkouropoulos

Kavala – Dikili Tash
10 -11 October 2023





ELGO - DIMITRA
HELLENIC AGRICULTURAL
ORGANIZATION - DIMITRA

Mt Pangaion (the Myths - 65 centuries ago)



ΥΠΟΥΡΓΕΙΟ ΠΟΛΙΤΙΣΜΟΥ
ΕΦΟΡΕΙΑ ΑΡΧΑΙΟΤΗΤΩΝ ΚΑΒΑΛΑΣ
MINISTRY OF CULTURE
EPHORATE OF ANTIQUITIES OF KAVALA



Dikili Tash

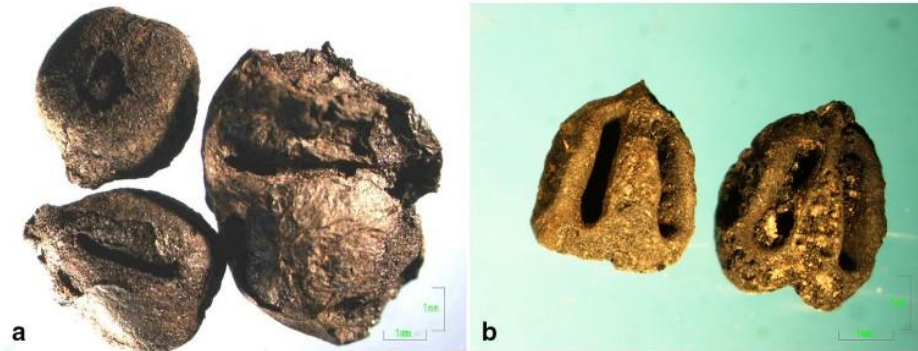
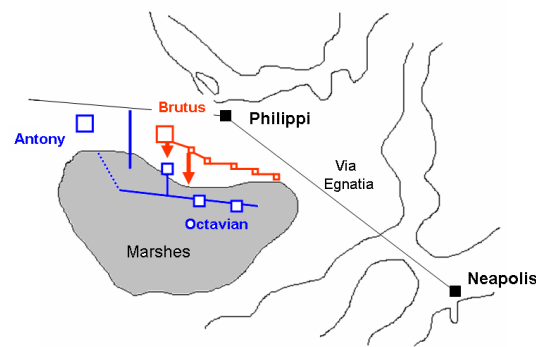


Fig. 6 a Grape pressings; b malformed pips from Dikili Tash, House 1



Fig. 12 Two handled cup from Dikili Tash.

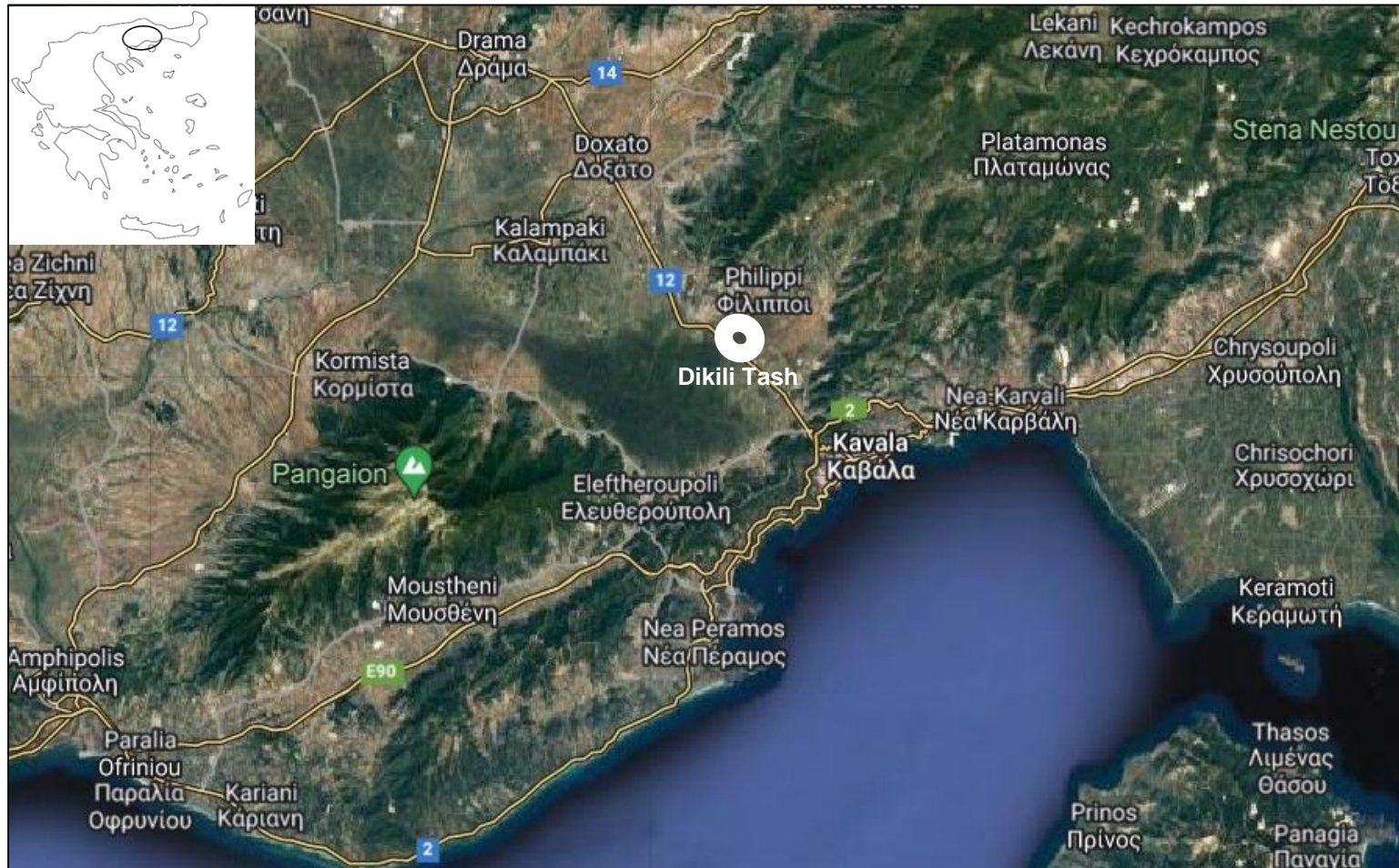


[Photos from: Valamoti et al. (2015)
An Archaeobotanical Investigation of
Prehistoric Grape Vine Exploitation
and Wine Making in Northern Greece:
Recent Finds from Dikili Tash]

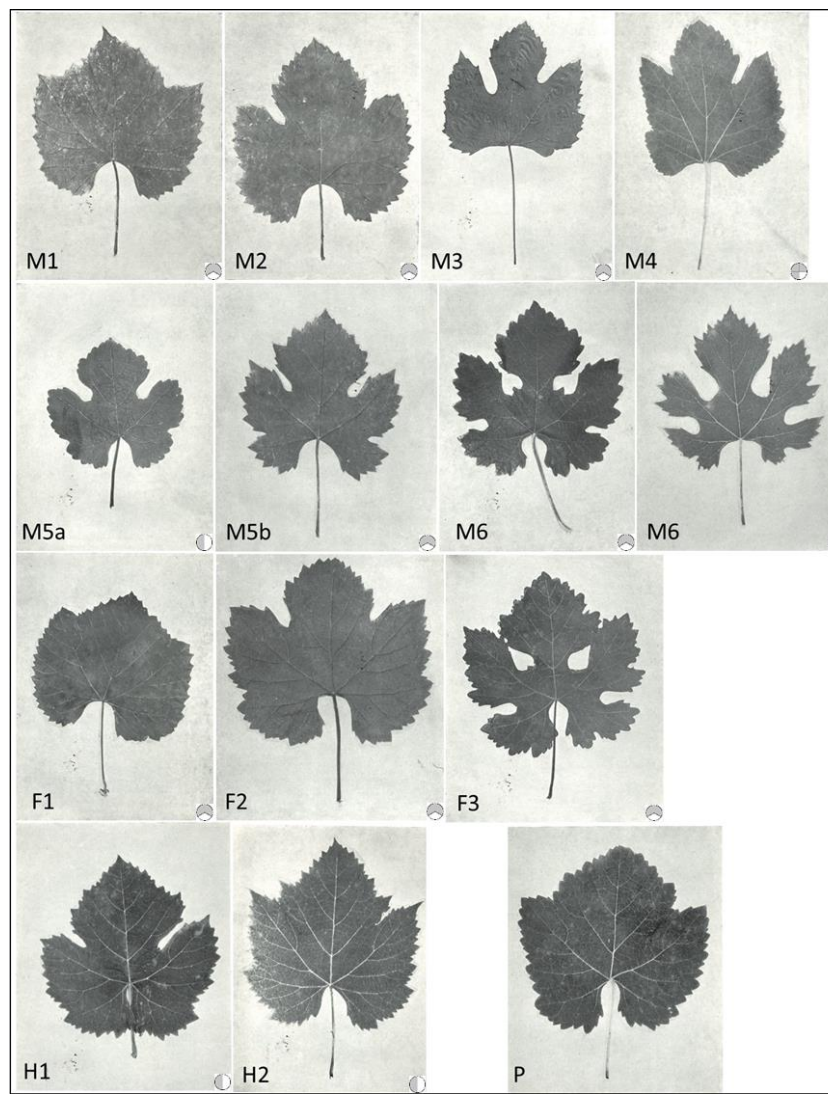
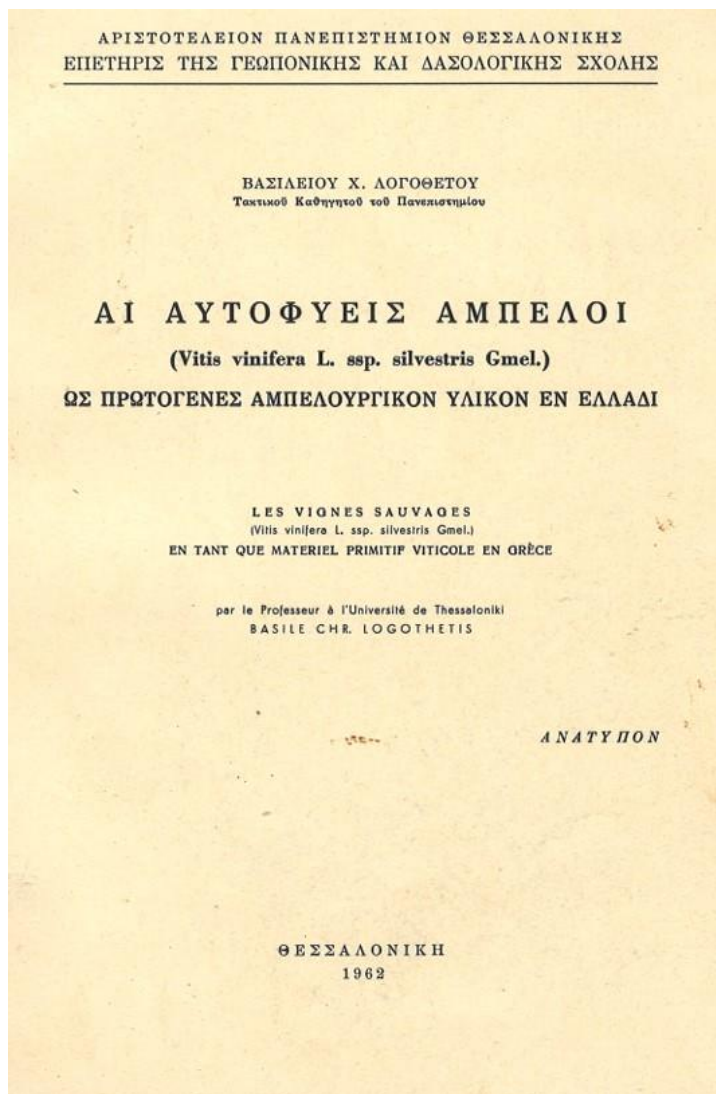


ELGO - DIMITRA
HELLENIC AGRICULTURAL
ORGANIZATION - DIMITRA

Is it still around?



Logothetis, 1962



Sylvestris collection sites around Dikili Tash

Mt Lekani (top)

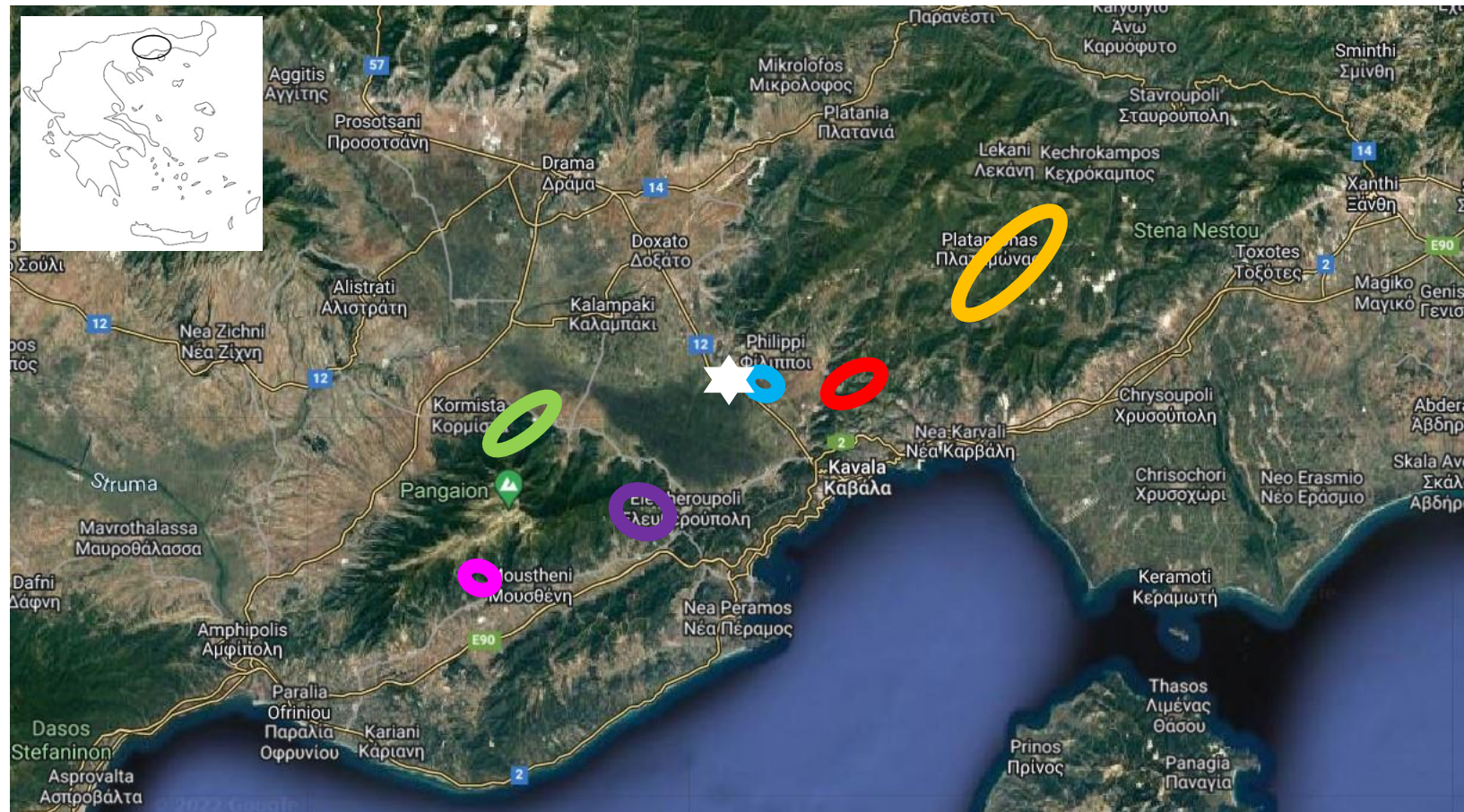
Mt Lekani (bottom)

Dikili Tash

Camera

Mesoropi

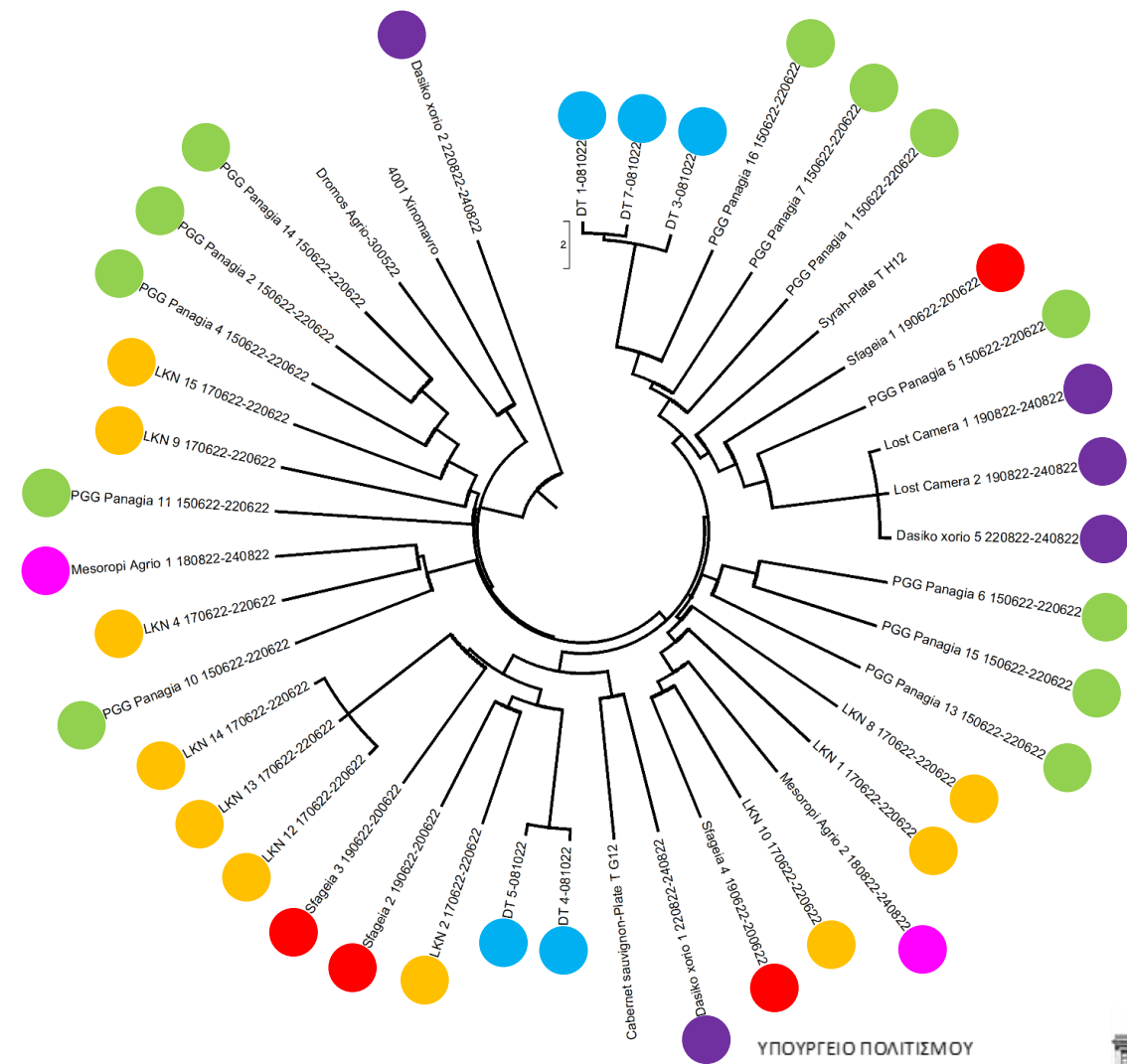
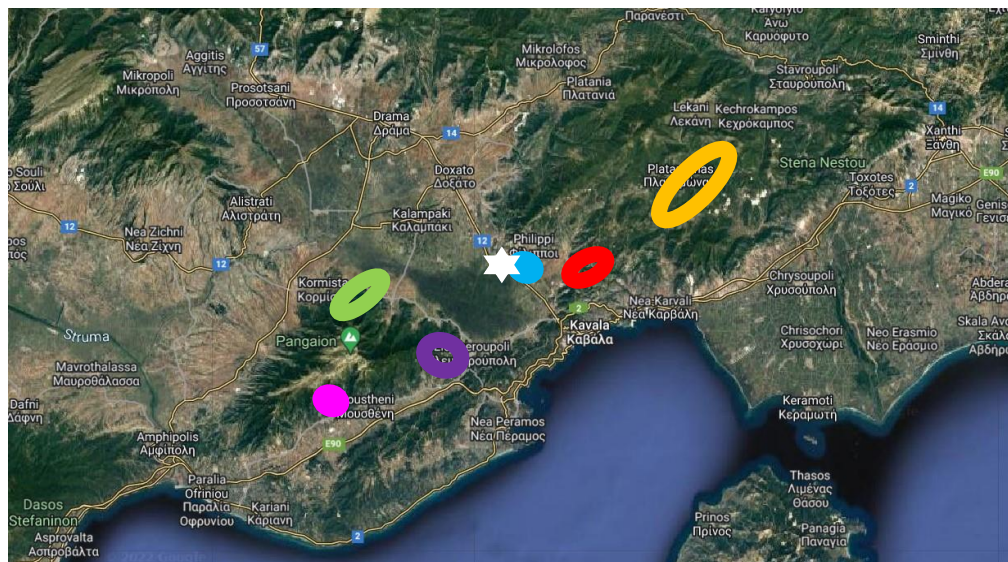
Monastery (towards to)





ELGO - DIMITRA
HELLENIC AGRICULTURAL
ORGANIZATION - DIMITRA

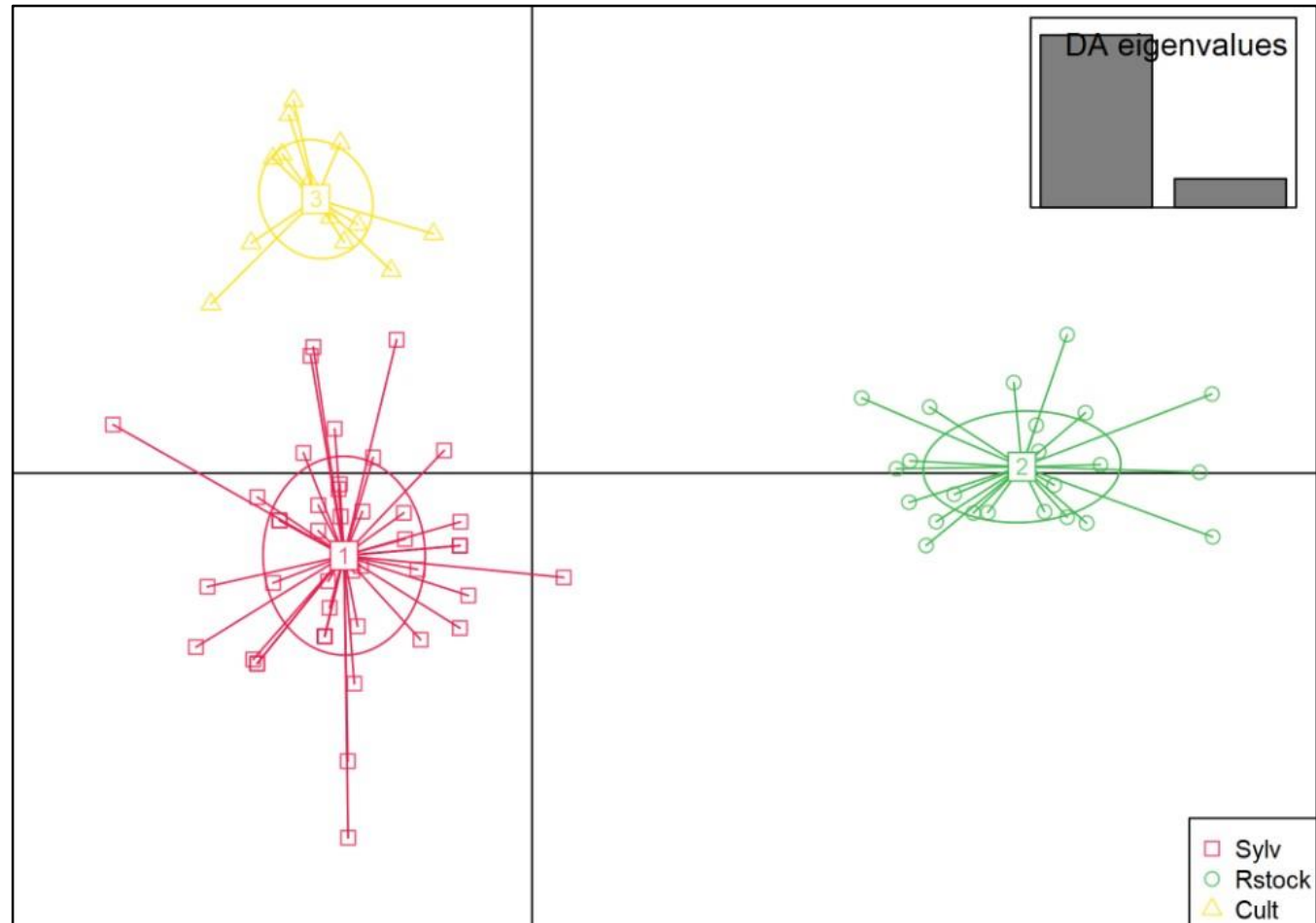
Primary SSR analysis (10 loci)



ΥΠΟΥΡΓΕΙΟ ΠΟΛΙΤΙΣΜΟΥ
ΕΦΟΡΕΙΑ ΑΡΧΑΙΟΤΗΤΩΝ ΚΑΒΑΛΑΣ
MINISTRY OF CULTURE
EPHORA OF ANTIQUITIES OF KAVALA



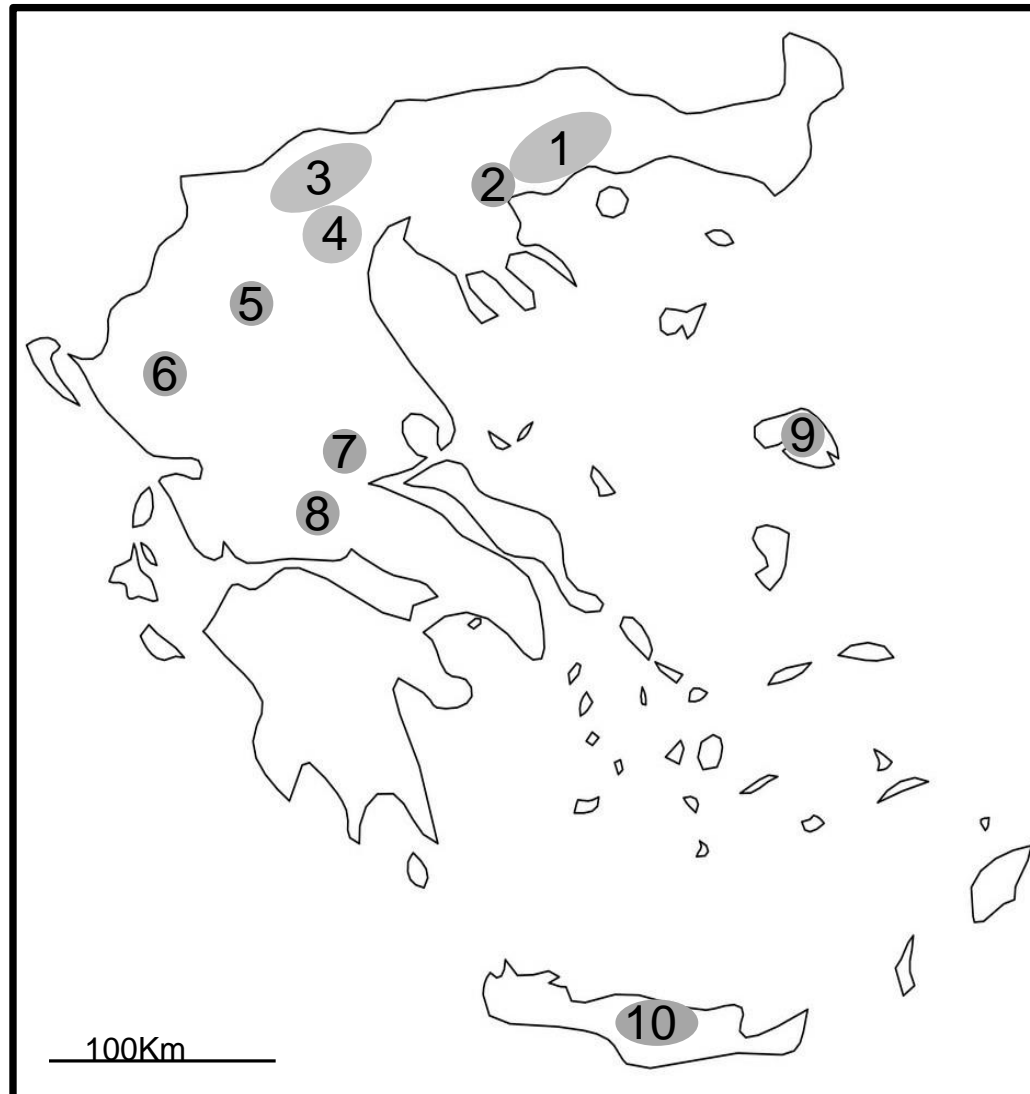
The Scatterplot



(Analysis performed by Erika Maul and Franco Rockel)

Sylvestris collection sites in Greece (our starting points)

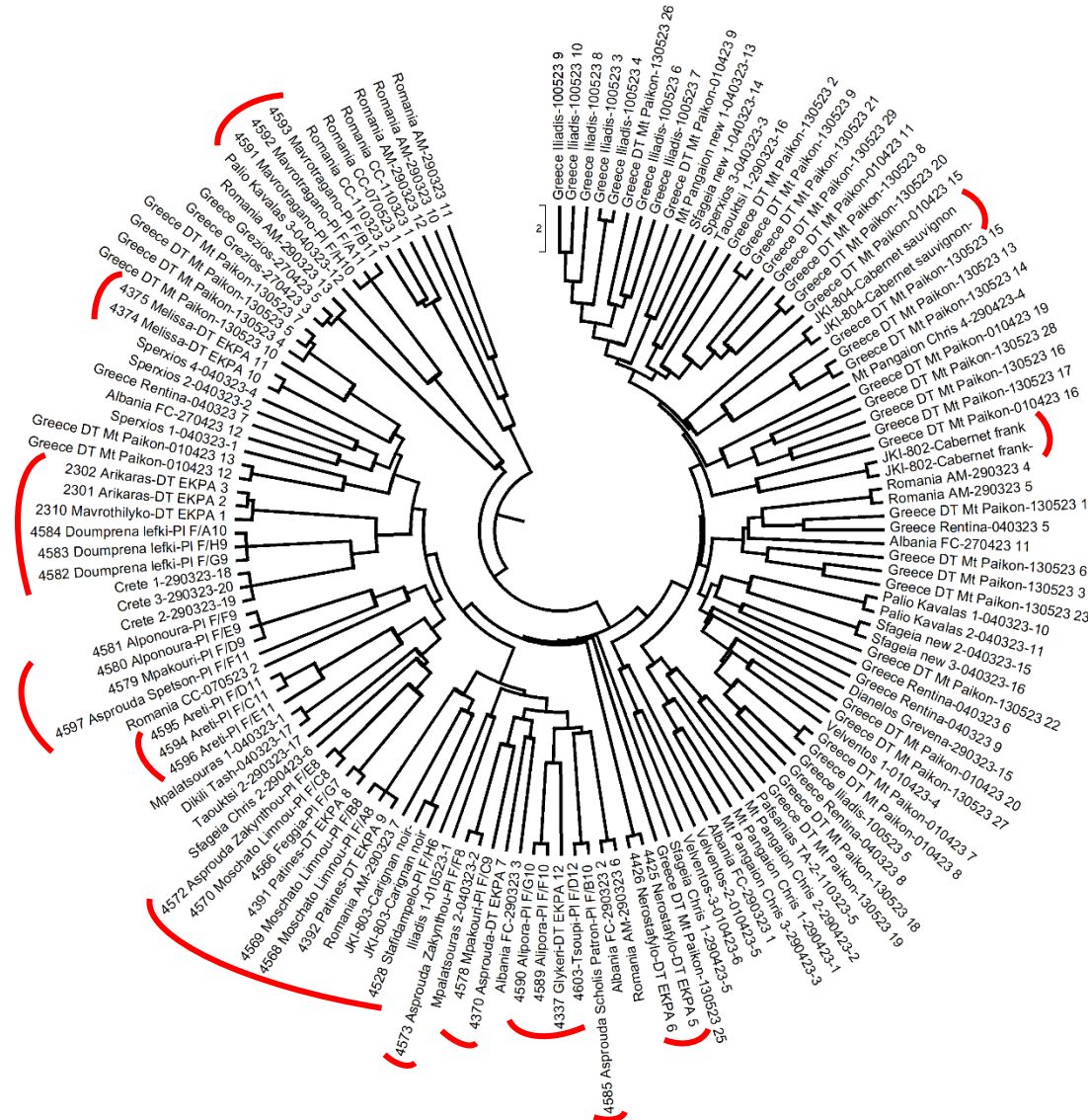
- 1) Dikili Tash and surrounding area
- 2) Rentina
- 3) Mt Paikon
- 4) Imathia region
- 5) Velventos
- 6) Grevena area
- 7) Phthiotis area
- 8) Phokida area
- 9) Lesbos
- 10) Crete





ELGO - DIMITRA
HELLENIC AGRICULTURAL
ORGANIZATION - DIMITRA

Distinction: true to type *Sylvestris* - hybrids



Ex-situ conservation

Plantlets of most of the genotypes analysed by SSRs are grown in pods in the green house facilities of the Vitis Department in Lykovrysi (Athens).

A copy of the collection will be established at the Institute of Plant Breeding and Genetic Resources (Thermi, Thessaloniki).



(File photograph)

The Greek Sylvestris Group (so far)

Dr Evangelia Avramidou	ELGO-DIMITRA
Dr Dimitrios Taskos	ELGO-DIMITRA
Dr Georgios Merkouropoulos	ELGO-DIMITRA
Dr Nikolaos Kontoudakis	International Hellenic University
Mrs Nikoleta Symeonidou	General public

THANK YOU
