

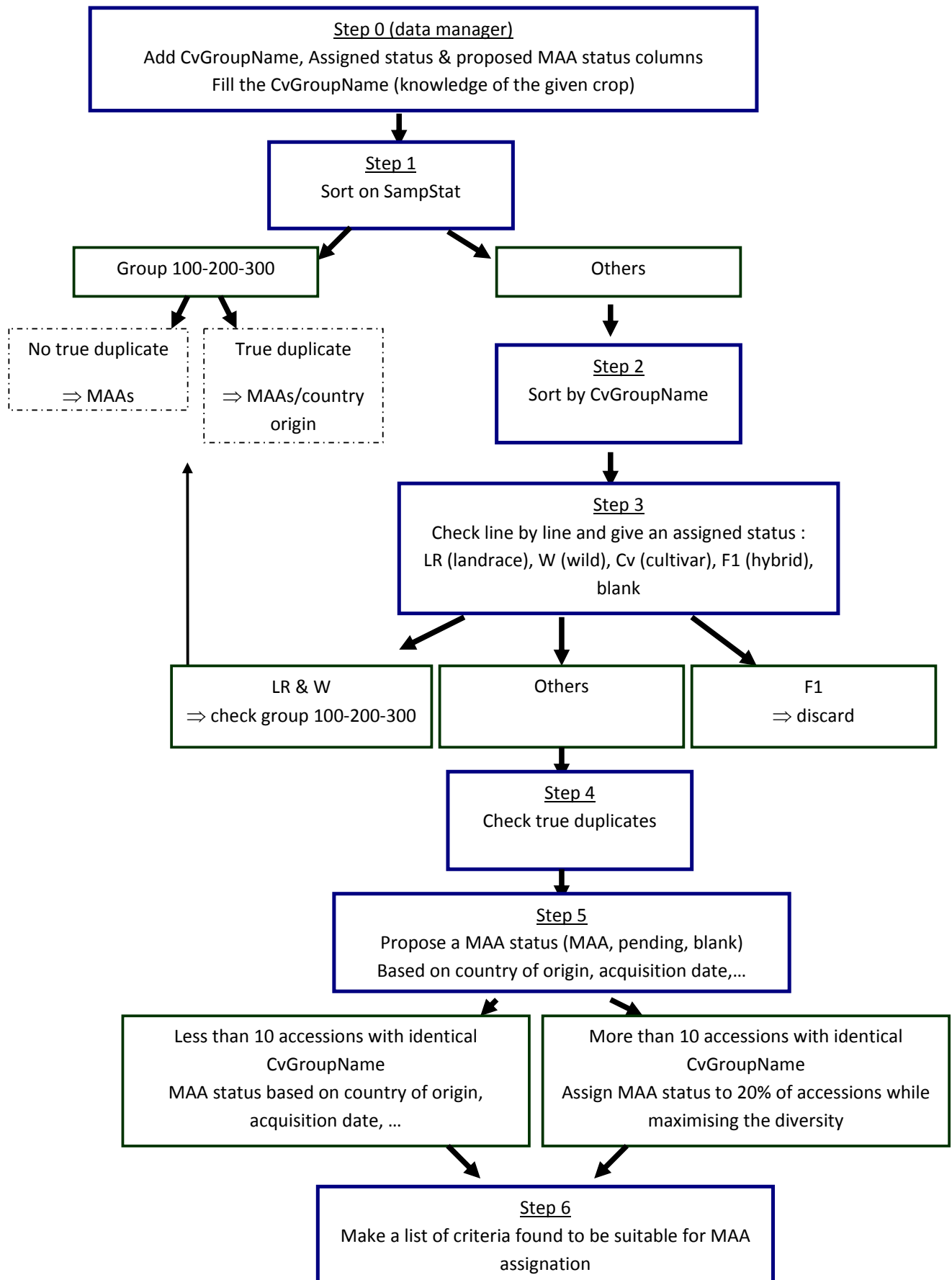
## **Selecting potential MAAs from the *Daucus* collections**

Workshop participants took the opportunity to start looking through the *Daucus* dataset from EURISCO as a group to discuss an agreed procedure for identifying MAAs. It was agreed that landrace and wild material should be treated separately but identification of landraces in particular might be difficult, especially where accessions with similar names were given a different entry in 'sample status'. If a collection site was specified or co-ordinates given then this may indicate a landrace, since this information is usually not recorded for advanced cultivars.

Where large groups of the same root type/variety are present (for example more than 10 accessions) it was thought that 20% of accessions could adequately represent the diversity present, although this should be verified by a person with a good knowledge of the crop type in question.

There were a variety of views on priorities and whether collection curators should be given a list of potential MAAs or a list in two parts with potential MAAs and 'pending' accessions which require further consideration.

The process for identifying potential MAAs is listed below:



Comments

CropName is not reliable as a number of cultivated accessions are indicated as wild

A lot of accessions have a CollNumber, this is not an indication of a landrace as thought primarily.