



UNIVERSITY OF
BIRMINGHAM

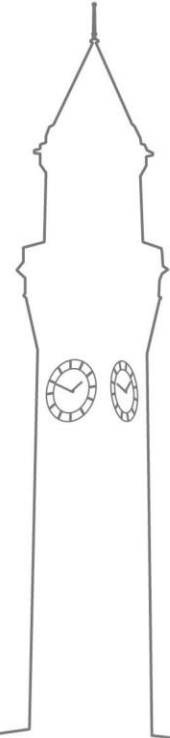


UK *In situ* CWR Inventory

Tamsyn Dawson and Nigel Maxted

ECPGR '*CWR in situ* data in EURISCO' project presentations

15th December, Thessaloniki, Greece

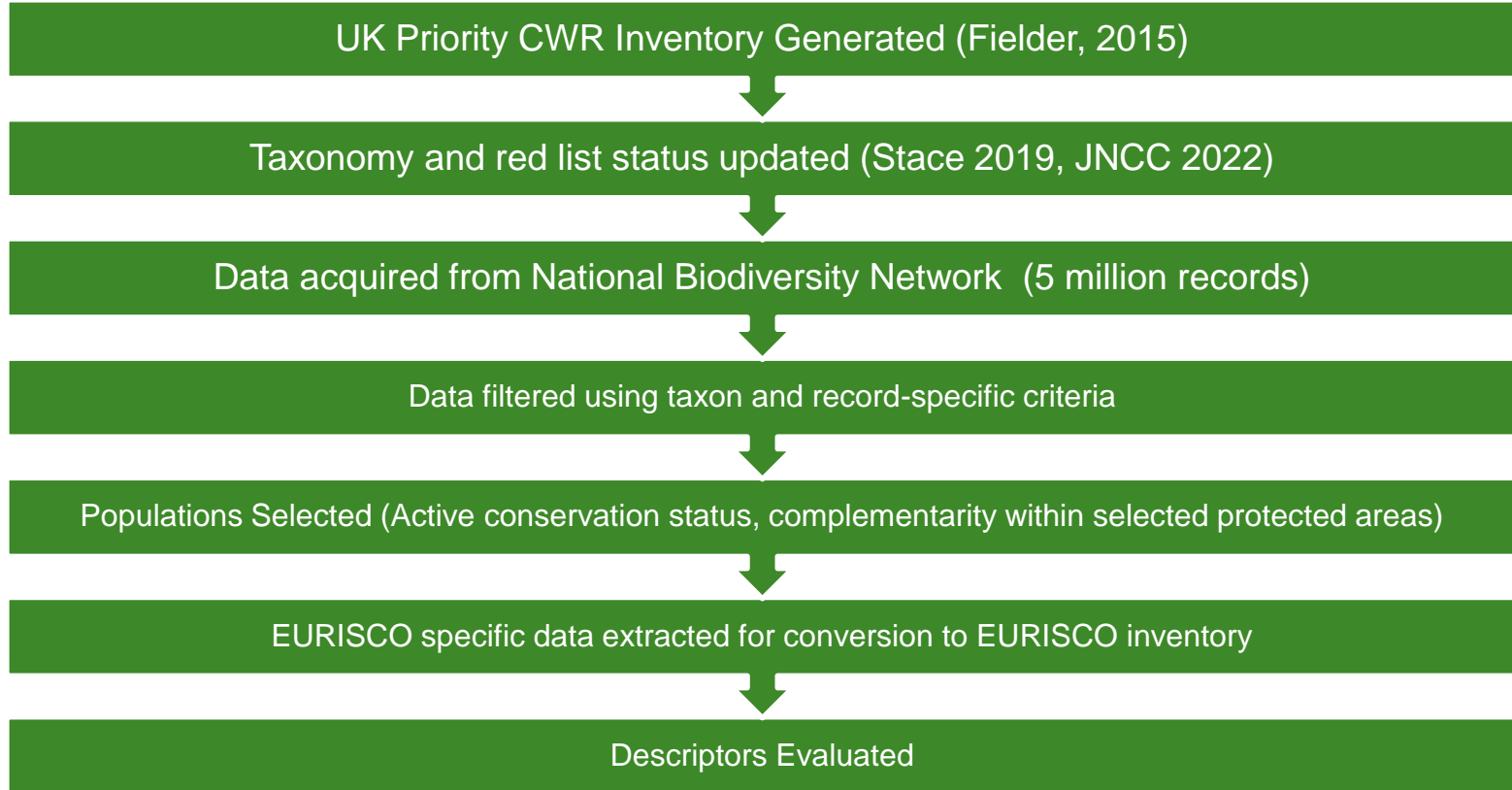


Summary

- Methodology
- Summary of results
- Options for upload
- Descriptors of note
- Suggestions for EURISCO descriptors



Workflow outline



Methodology – Data Acquisition

NATIONAL BIODIVERSITY NETWORK TRUST NBN FORUM NBN ATLAS LOG OUT

SEARCH

JOIN OR DONATE NBN ATLAS NEWS CONTACT US MY PROFILE LOG OUT CHOOSE NBN ATLAS

NBN atlas

SPECIES LOCATIONS ▾ ANALYSE GET INVOLVED ▾ DATA AND PARTNERS ▾ ABOUT ▾ HELP

The NBN Atlas is the UK's largest repository of publicly available biodiversity data

Search the NBN Atlas

EXPLORE YOUR AREA
Find out about the wildlife in your area

SEARCH FOR SPECIES
Search the NBN Atlas

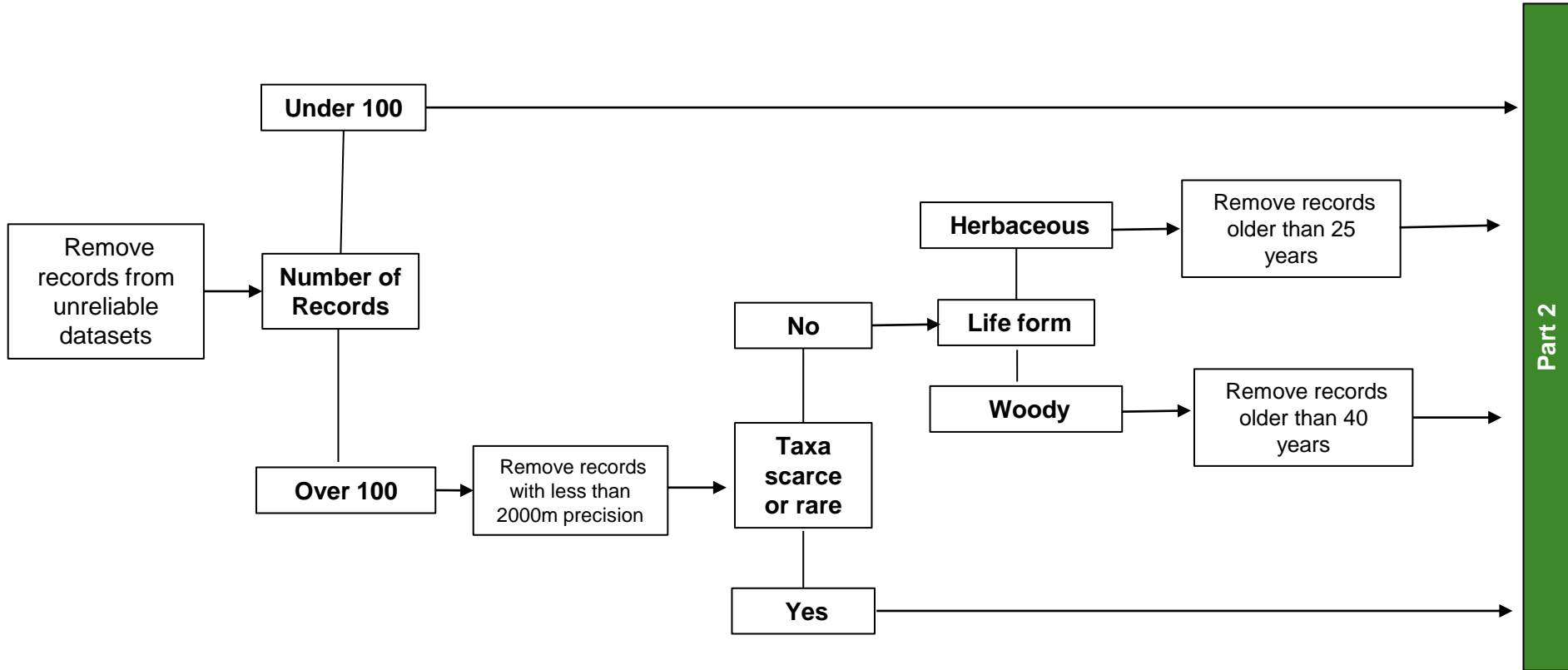
EDUCATION & ACADEMIA
Is your institution using the NBN Atlas?

SHARE DATA
How to record wildlife and share data

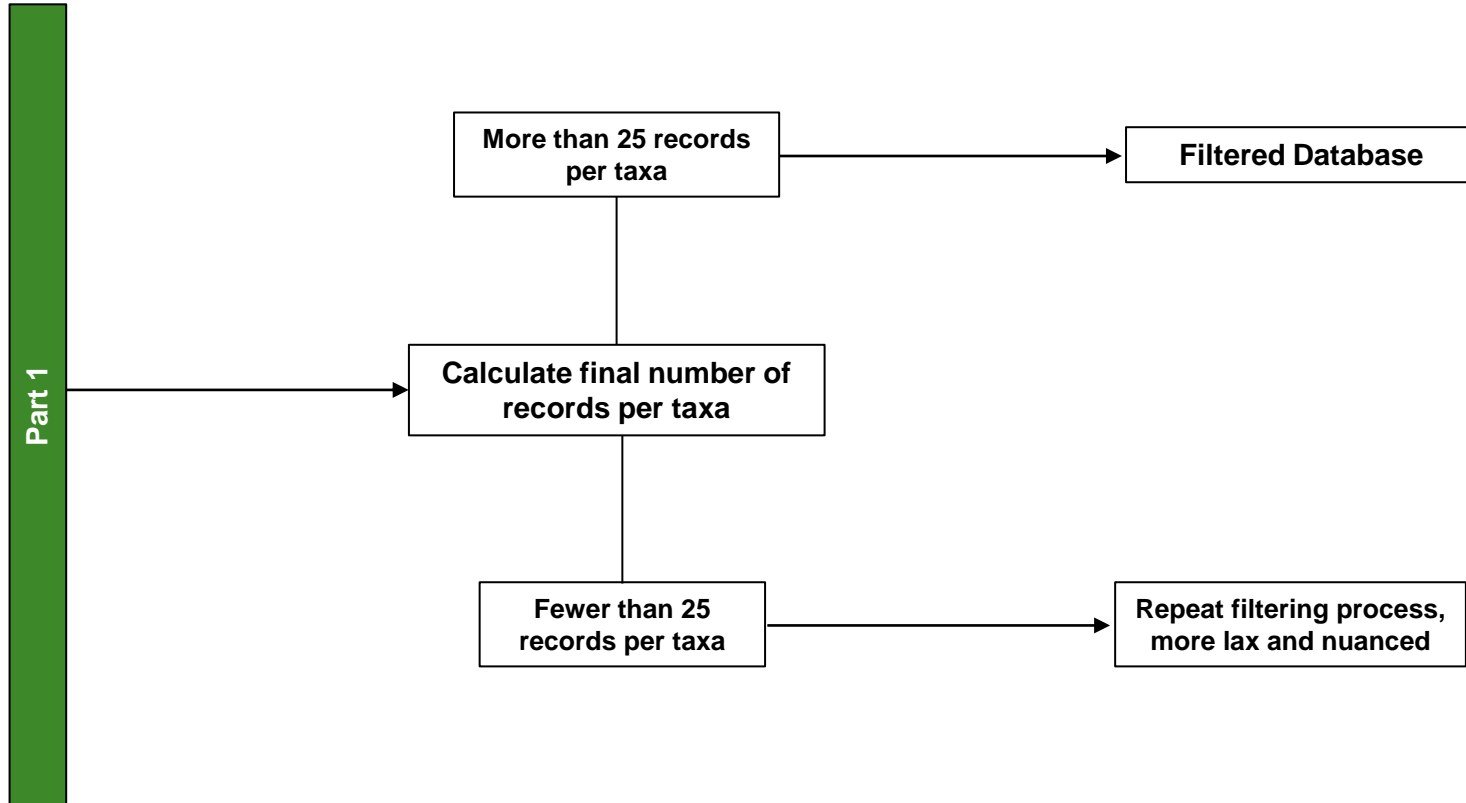
<https://nbn.org.uk>

5 million records
acquired for 223
taxa

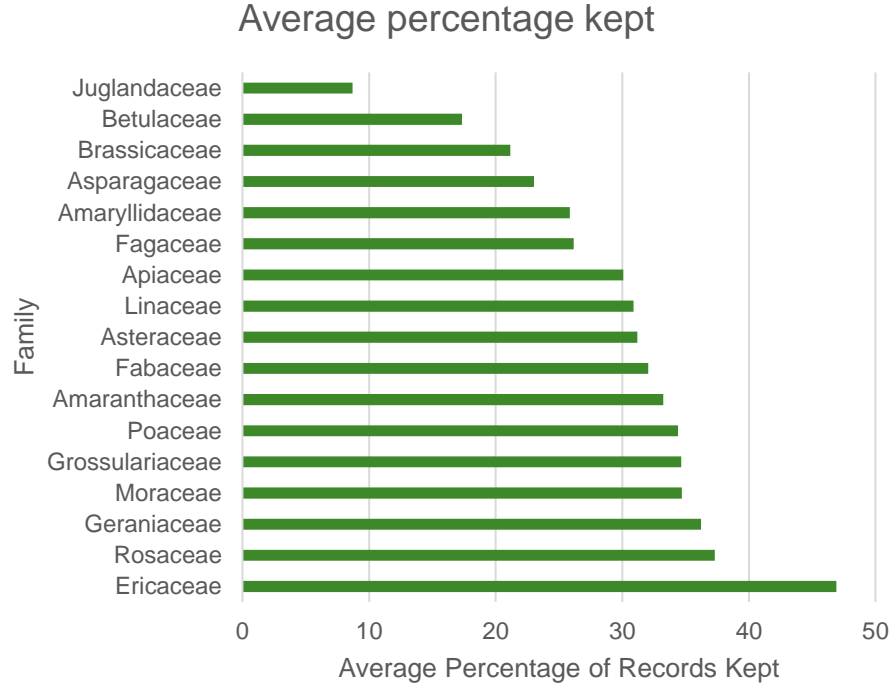
Methodology – Filtering pt 1



Methodology – Filtering pt 2

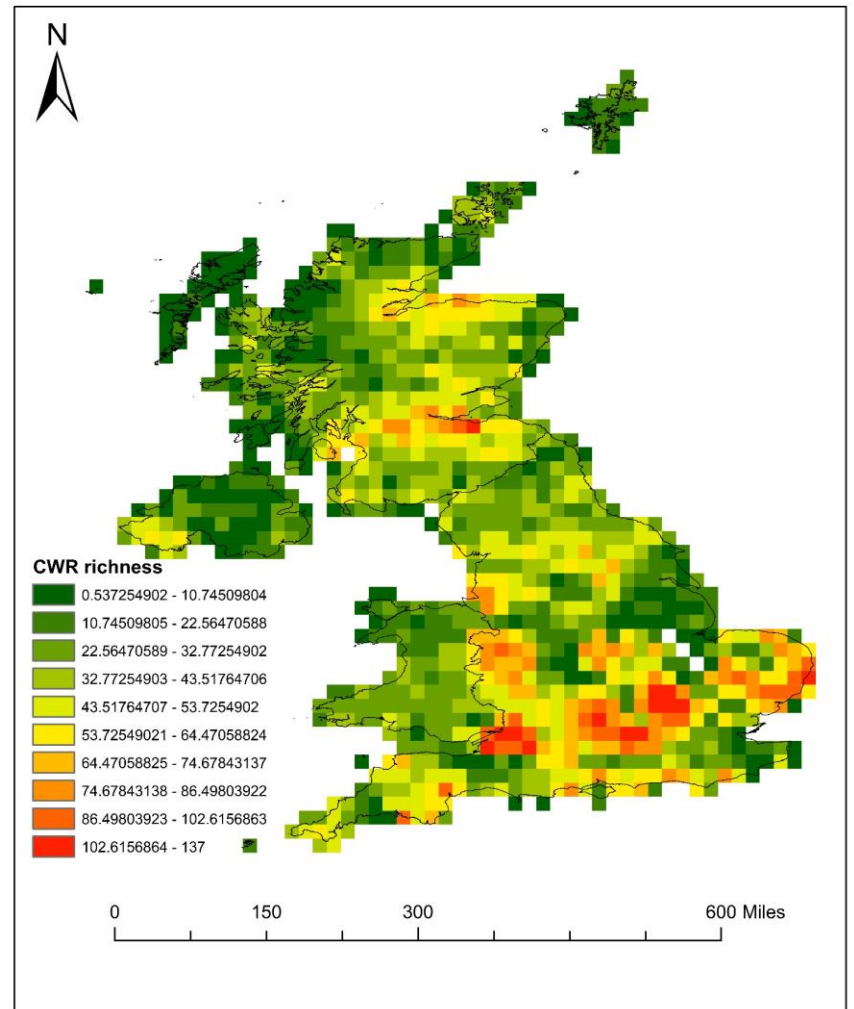


Methodology – Filtering outcomes



Results – UK Inventory

UK BAP Habitat	Richness
Acid grassland	120
Arable and horticulture	205
Bog	67
Broadleaved mixed and yew woodland	203
Built-up areas and gardens	206
Calcareous grassland	149
Coniferous woodland	161
Dwarf shrub and heath	157
Fen marsh and swamp	125
Improved grassland	210
Inland rock	78
Littoral rock	108
Littoral sediment	173
Neutral grassland	119
Standing open water and canals & Rivers and streams	152
Supralittoral rock	103
Supralittoral sediment	147



Compilation

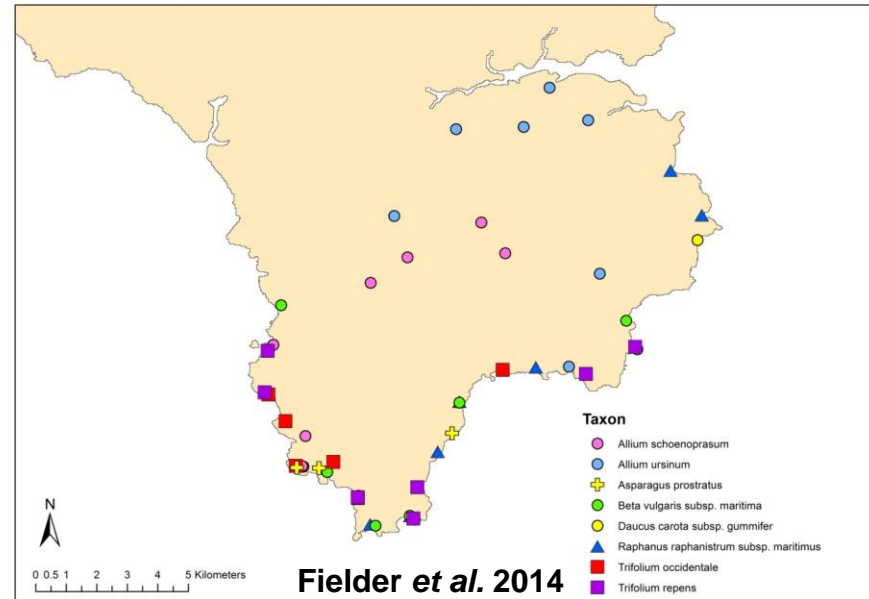
Attribute	Data required
Red List	JNCC
INSTNAME	Which INST for which taxa type
ACCENUMB	Genebank records
Elevation	LiDar DEM
Pop Src - status of occurrence site	CEH land use
Site Prot	PA sites
MANAGISNT	Management information of site

Options for Upload

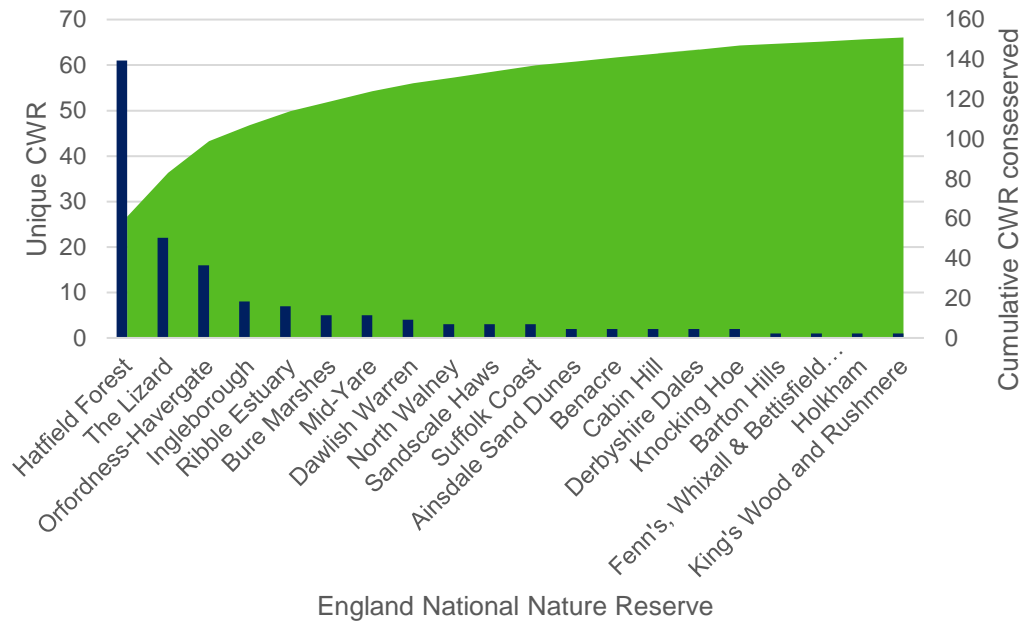
Database	# Taxa	# Records
All UK Records	222	612923
Records within Protected Areas	216	165935
Top 20 NNRs	144	4834
Actively Conserved (Lizard)	45	697

Current Active conservation - Lizard

Genus	#Populations recorded
Agrostis	17
Allium	105
Alopecurus	1
Anthoxanthum	35
Arrhenatherum	1
Asparagus	45
Beta	4
Brassica	3
Bromus	19
Cynosurus	18
Dactylis	38
Erodium	2
Holcus	41
Koeleria	46
Linum	3
Lolium	6
Lotus	82
Medicago	2
Poa	5
Prunus	3
Raphanus	3
Rubus	7
Trifolium	210
Vicia	1



Future Active conservation - England NNRs



- Involvement with Natural England
- Eventual aim to provide recommendations to land managers to promote active *in situ* conservation

Descriptors of Note – Taxon Inventory

Descriptor	Comments
TAXONID	Used NBN taxon IDs. Taxonomy used was Stace 2019
Genepool	Used both Genepool and Taxon Group concepts
NATIONAL_CAT	Used the 2019 UK Red List assessment
Dist_status	Taken from Kew Plants of the World Online

Descriptors of Note – Population level Inventory

Descriptors – data entry different

POPID

LIAISONCODE

LIAISONNAME

CONSACTION

MLSSTAT

OCCURSITE

ELEVATION

POPSRC

Descriptors – Not filled for all data

MNGINSTCODE

MNGINSTNAME

OTHERNUMB

HERBCODE

HERBNAME

SPECNUMB

CONSACTION

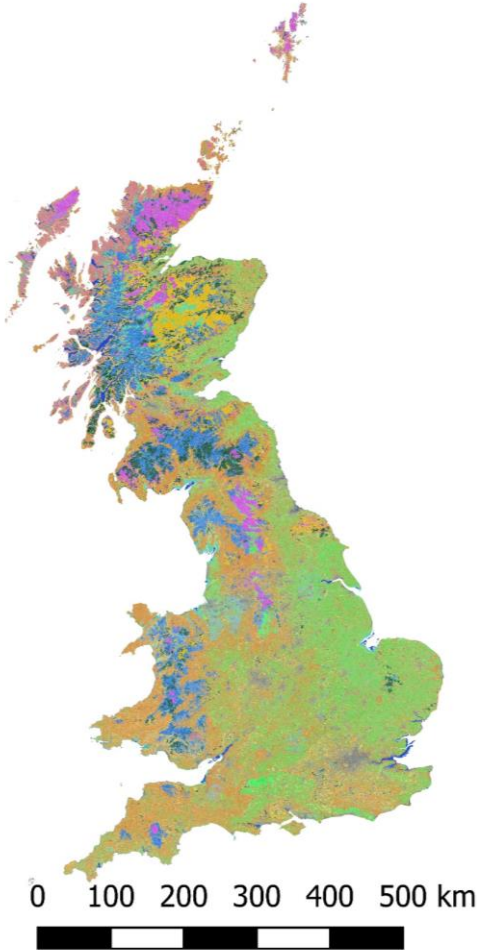
MLSSTAT

PUID

Descriptors of Note – Land Cover

Data from CEH 2022

EURISCO POPSRC	Attribute	UK Land cover class
Wild	10	
Forest or woodland	11	Deciduous woodland, Coniferous woodland
Shrubland	12	Heather, Heather grassland
Grassland	13	Improved grassland, Neutral grassland, Calcareous grassland, Acid grassland, Fen
Desert	14	Not present in UK
Aquatic	15	Saltwater, Freshwater, Supralittoral rock, Supralittoral sediment, Littoral rock, Littoral sediment, Saltmarsh
Farm or cultivated	20	Arable
Field	21	
Orchard	22	
Backyard	23	
Fallow land	24	
Pasutre	25	
Park	28	
Weedy	60	
Roadside	61	
Field margin	62	
Other	99	Bog, Inland rock, urban, suburban



Descriptors of Note – UK EURISCO dataset

Descriptor	
Liaison Code	Depends on outcome of UK PGR meeting
PUID	From Occurrence ID on NBN (data source)
ACCENUMB	
MLSSTAT	No duplicates available at present
Elevation data	Not directly provided by data source, acquired by join with UK DEM LiDAR data, covers >93% of England at 2m spatial resolution

Descriptors of Note – EURISCO dataset

- STORAGE
- *In situ vs in nature*

Type of germplasm storage	(STORAGE)	not in the CWR-NI
For <i>in situ</i> CWR populations this descriptor should always have the value 60. 60) <i>in situ</i> wild population		
NOTE: Status 60 is a new status! The description of this descriptor has been changed to apply to CWR <i>in situ</i> .		

Descriptors of Note – EURISCO dataset

- Clarify AcceURL – is for relevant accession or link to information on population

Accession URL	(ACCEURL)	Links to associated information (LINKS)
URL linking to additional data about the population.		
Example: http://gbis.ipk-gatersleben.de/gbis_i/detail.jsf?akzessionId=31805		
NOTE: This description deviates from the <i>ex situ</i> upload format.		

Suggestions for EURISCO *in situ* dataset

- License type and attribution
- Including ADM1, ADM2
- Status of occurrence site – greater specificity e.g. UK BAP Broad habitats - Bog, mountains, not well covered

Limitations (UK)

- Depends on previous data collection and resulting bias
- Limited active conservation
- No ground-truthing / verified *in situ*
- LIASON CODE will depend on outcome of UK PGR meeting
- Management priorities



Thank you!

